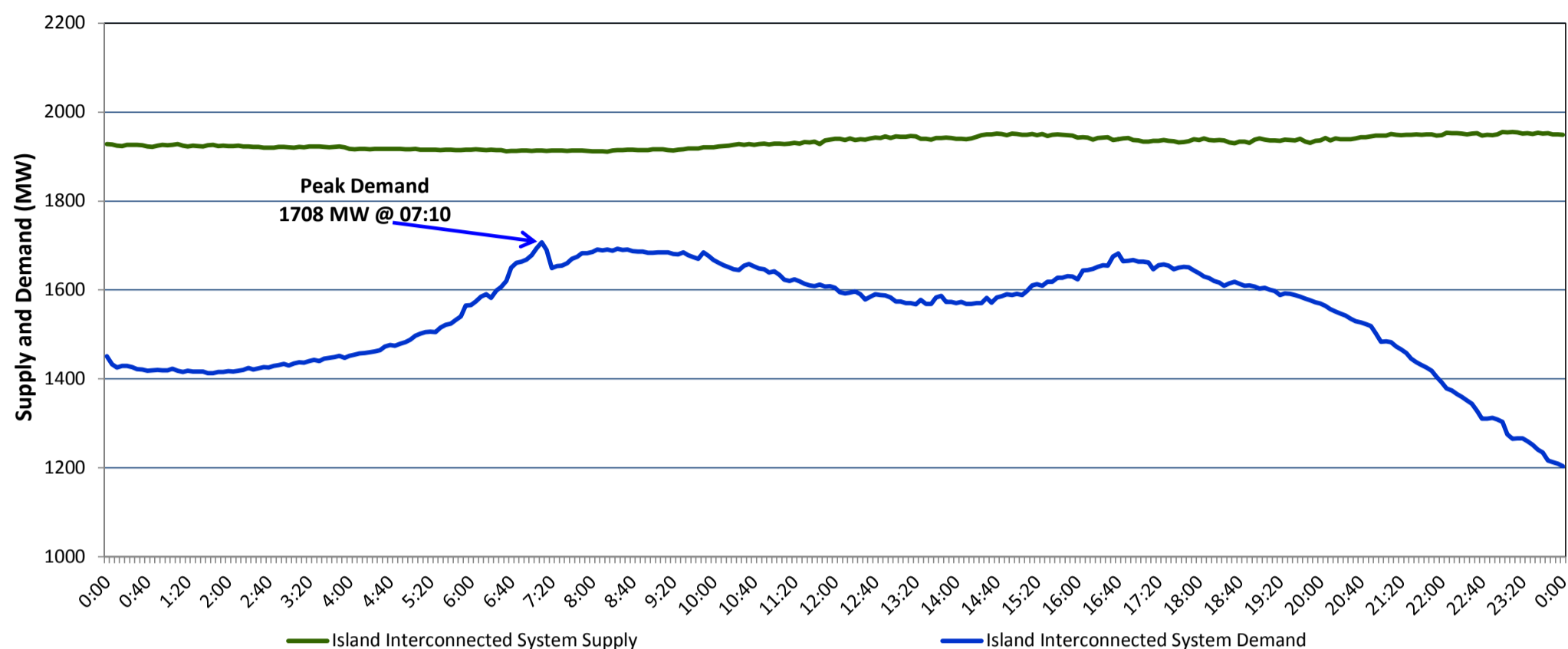


## Newfoundland Labrador Hydro (NLH) Supply and Demand Status Report Filed Thursday, February 09, 2017

### Section 1 Island Interconnected System Supply and Demand Actual 24 Hour System Performance For Wednesday, February 08, 2017



#### Supply Notes For February 08, 2017

1,2

- A As of 1556 hours, January 20, 2017, Holyrood Unit 2 available at 150 MW (170 MW).  
 B As of 1238 hours, February 03, 2017, Stephenville Gas Turbine available at 38 MW (50 MW).  
 C As of 1425 hours, February 06, 2017, Hardwoods Gas Turbine unavailable (50 MW).  
 D As of 2006 hours, February 06, 2017, Holyrood Unit 1 available at 150 MW (170 MW).

### Section 2 Island Interconnected Supply and Demand

Thu, Feb 09, 2017	Island System Outlook <sup>3</sup>	Seven-Day Forecast	Temperature (°C)		Island System Daily Peak Demand (MW)	
			Morning	Evening	Forecast	Adjusted <sup>7</sup>
Available Island System Supply: <sup>5</sup>	1,910 MW	Thursday, February 09, 2017	2	-5	1,530	1,421
NLH Generation: <sup>4</sup>	1,590 MW	Friday, February 10, 2017	5	-3	1,465	1,357
NLH Power Purchases: <sup>6</sup>	120 MW	Saturday, February 11, 2017	-8	-10	1,570	1,461
Other Island Generation:	200 MW	Sunday, February 12, 2017	-11	-10	1,505	1,396
Current St. John's Temperature:	2 °C	Monday, February 13, 2017	-10	-5	1,585	1,475
Current St. John's Windchill:	N/A °C	Tuesday, February 14, 2017	-4	-1	1,485	1,377
7-Day Island Peak Demand Forecast:	1,585 MW	Wednesday, February 15, 2017	0	1	1,345	1,238

#### Supply Notes For February 09, 2017

3

- Notes:
1. Generation outages for running and corrective maintenance are included. These are not unusual for power system operations. They generally do not impact customer supply. The power system operators schedule outages to system equipment whenever possible to coincide with periods when customer demands are low and sufficient supply reserves are available. However, from time to time equipment outages are necessary and reserves may be impacted.
  2. Due to the Island Interconnected System being isolated from the larger North American grid, when there is a sudden loss of large generating units some customer's load must be interrupted for short periods to bring generation output equal to customer demand. This automatic action of power system protection, referred to as under frequency load shedding, is necessary to ensure the integrity and reliability of system equipment. Under frequency events typically occur 5 to 8 times per year on the Island Interconnected System and the resultant customer load interruptions are generally less than 30 minutes.
  3. As of 0800 Hours.
  4. Gross output including station service at Holyrood (24.5 MW) and improved NLH hydraulic output due to water levels (35 MW).
  5. Gross output from all Island sources (including Note 4).
  6. NLH Power Purchases include: CBPP Co-Gen, Nalcor Exploits, Rattle Brook, Star Lake, Vale capacity assistance (when applicable), and Wind Generation.
  7. Adjusted for CBP&P, Praxair and Vale interruptible load as well as the impact of voltage reduction, when applicable.

### Section 3 Island Peak Demand Information Previous Day Actual Peak and Current Day Forecast Peak

Wed, Feb 08, 2017	Actual Island Peak Demand <sup>8</sup>	07:10	1,708 MW
Thu, Feb 09, 2017	Forecast Island Peak Demand		1,530 MW

- Notes: 8. Island Demand is supplied by NLH generation and purchases, plus generation owned and operated by Newfoundland Power and Corner Brook Pulp & Paper (Deer Lake Power, DLP).